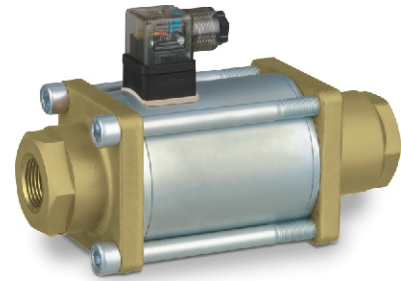


nominal specifications	CXD 2/2-way coaxial valve
2/2-way valve	direct acting / solenoid
pressure range	0-600 psi
connection	FNPT threads
function	NC - normally closed
	NO - normally open
design	pressure balanced, with spring return
body materials parts in contact with media	brass, stainless steel
seal materials seat / dynamic / static	FPM / PTFE / FPM customer to verify seal / seat compatibility with media
media	gaseous-liquid-gelatinous-highly viscous-contaminated
electrical connection	PG 9, plug acc. DIN EN 175301-803 form A, LED



technical data	CXD 10	CXD 15	CXD 20	CXD 25
orifice mm	DN 10	DN 15	DN 20	DN 25
port connection threads	FNPT 3/8	FNPT 1/2	FNPT 3/4	FNPT 1
CV A → B	2.5	6.0	8.6	14.0
media temperature	-4 °F to +212 °F	-4 °F to +212 °F	-4 °F to +212 °F	-4 °F to +212 °F
ambient temperature	-4 °F to +140 °F	-4 °F to +140 °F	-4 °F to +140 °F	-4 °F to +140 °F
operating time opening / closing	45 ms / 70 ms	60 ms / 130 ms	105 ms / 150 ms	150 ms / 190 ms
vacuum leak rate	< 10 ⁻⁴ mbar·l·s ⁻¹	< 10 ⁻⁴ mbar·l·s ⁻¹	< 10 ⁻⁴ mbar·l·s ⁻¹	< 10 ⁻⁴ mbar·l·s ⁻¹
flow direction	A → B	A → B	A → B	A → B
	B → A (P 180 psi max.)	B → A (P 180 psi max.)	B → A (P 180 psi max.)	B → A (P 180 psi max.)
nominal voltage	DC 24 V / AC 110 V	DC 24 V / AC 110 V	DC 24 V / AC 110 V	DC 24 V / AC 110 V
current consumption	DC 1.45 A / AC 0.36 A	DC 2.1 A / AC 0.41 A	DC 2.2 A / AC 0.56 A	DC 2.5 A / AC 0.62 A
insulation class	H	H	H	H
enclosure protection	IP 65	IP 65	IP 65	IP 65
energized duty rating	ED 100%	ED 100%	ED 100%	ED 100%
length L1 / L2	5.71 in / 1.97 in	6.81 in / 2.76 in	7.60 in / 3.15 in	8.35 in / 3.54 in
length L3 / L4	- / -	- / -	- / -	- / -
weight	3.75 lb	8.16 lb	11.90 lb	15.65 lb

accessories optional	order-codes			
mounting brackets stainless steel	1 2 3 5 5 5	1 2 3 5 5 6	1 2 3 5 5 7	1 2 3 5 5 8
limit switch Reed AC / DC 10-30 V	- / -	- / -	- / -	- / -

drawings	circuit symbols	valve order-code
	<p>function: NC valve normally closed</p> <p>function: NO valve normally open</p>	<p>9 1</p> <p>NC=1 NO=2</p> <p>DN10=5 DN15=6 DN20=7 DN25=8</p> <p>AC110V=1 DC24V =4</p> <p>brass=1 stainless steel=2</p>