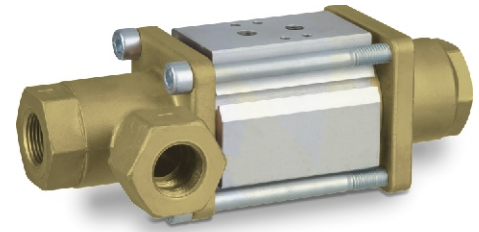


nominal specifications	CXF DR 3/2-way coaxial valve
3/2-way valve	externally controlled / air operated
pressure range	0-600 psi
connection	FNPT threads
function	NC - normally closed, flow A ⇒ C NO - normally open, flow A ⇒ B
design	pressure balanced, with spring return
body materials parts in contact with media	brass
seal materials seat / dynamic / static	PTFE / FPM / FPM customer to verify seal / seat compatibility with media
media	gaseous-liquid-gelatinous-highly viscous-contaminated
actuator connection	FNPT 1/8 with NAMUR pilot valve interface



technical data	CXF 10 DR	CXF 15 DR	CXF 20 DR	CXF 25 DR
orifice mm	DN 10	DN 15	DN 20	DN 25
port connection threads	FNPT 3/8	FNPT 1/2	FNPT 3/4	FNPT 1
CV A ⇒ B / A ⇒ C	2.5 / 2.2	6.1 / 4.5	10.8 / 7.7	15.0 / 12.7
media temperature	-4 °F to +212 °F	-4 °F to +212 °F	-4 °F to +212 °F	-4 °F to +212 °F
ambient temperature	-4 °F to +140 °F	-4 °F to +140 °F	-4 °F to +140 °F	-4 °F to +140 °F
pneumatic actuation	pilot valve accessory	pilot valve accessory	pilot valve accessory	pilot valve accessory
actuating pressure	60-120 psi	60-120 psi	60-120 psi	60-120 psi
actuation time opening, 60 psi actuating pressure	30 ms to 3000 ms	35 ms to 3000 ms	40 ms to 3000 ms	50 ms to 3000 ms
actuation time closing, 60 psi actuating pressure	50 ms to 3000 ms	60 ms to 3000 ms	60 ms to 3000 ms	70 ms to 3000 ms
vacuum leak rate	< 10 ⁻⁴ mbar·l·s ⁻¹	< 10 ⁻⁴ mbar·l·s ⁻¹	< 10 ⁻⁴ mbar·l·s ⁻¹	< 10 ⁻⁴ mbar·l·s ⁻¹
flow direction	A ⇒ B / A ⇒ C B ⇒ A	A ⇒ B / A ⇒ C B ⇒ A	A ⇒ B / A ⇒ C B ⇒ A	A ⇒ B / A ⇒ C B ⇒ A
length L1 / L2	6.54 in / 1.97 in	7.87 in / 2.76 in	9.02 in / 3.15 in	9.80 in / 3.54 in
length L3 / L4	1.46 in / 1.26 in	2.36 in / 1.52 in	2.83 in / 1.79 in	3.15 in / 1.89 in
weight without pilot valve	3.31 lb	6.61 lb	9.70 lb	13.45 lb

accessories optional	order-codes			
5/2-way pilot valve NAMUR DC 24 V	1 2 3 7 4 7	1 2 3 7 4 7	1 2 3 7 4 7	1 2 3 7 4 7
5/2-way pilot valve NAMUR AC 110 V	1 2 3 7 4 8	1 2 3 7 4 8	1 2 3 7 4 8	1 2 3 7 4 8
mounting brackets stainless steel	1 2 3 5 5 5	1 2 3 5 5 6	1 2 3 5 5 7	1 2 3 5 5 8
limit switch Reed AC / DC 10-30 V	1 2 3 5 5 4	1 2 3 5 5 4	1 2 3 5 5 4	1 2 3 5 5 4

drawings	circuit symbols	valve order-code
	<p>function: NC valve normally closed</p> <p>function: NO valve normally open</p>	<p>9 8 3 1</p> <p>NC=7 NO=8</p> <p>DN10=5 DN15=6 DN20=7 DN25=8</p>